



Simple. Natural. Hardwoods®

# RED OAK: GLACIAL

Scientific Name: Quercus Rubra

Red Oak, from the Glacial region, is celebrated for its strength and durability. With a pronounced grain and a consistent color palette - spanning from tan to medium brown- it offers both visual appeal and dependable performance. This combination makes Red Oak a favorite for flooring, furniture, cabinetry, and millwork.

Red Oak's renowned for its hardness and wear resistance, suited to high-traffic floors and structural applications. The wood's excellent staining qualities enable it to seamlessly fit into a variety of decor themes. NWH ensures superior quality by kiln drying Red Oak, providing a level of consistency that elevates it beyond standard offerings, making it a preferred choice for diverse projects and applications.

## What's Red Oak Used For?

- Cabinetry
- Furniture
- Flooring
- Joinery
- Doors
- Windows
- Mouldings
- Paneling
- Caskets



## Why Red Oak?

- Desirable grain patterns
- Extremely durable
- High Janka for resilience
- Excels with varied color finishes

## Quick Fact

Red Oak grown in cooler, Glacial-like climates often exhibits a slower growth rate, which produces tighter growth rings and a more uniform color.



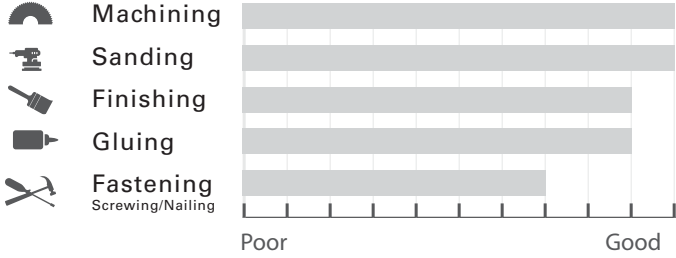
Learn More





Simple. Natural. Hardwoods®

**Red Oak**



Weight per Bdft: 3.64  
 Specific Gravity (Density): 0.63  
 Hardness (Janka): 1220  
 Bending Strength (MOR): 14380  
 Bending Stiffness (MOE): 1761  
 Dimensional Movement (Shrinkage): R 4.0%, T 8.6%



**Grades We Offer**



**Sup**



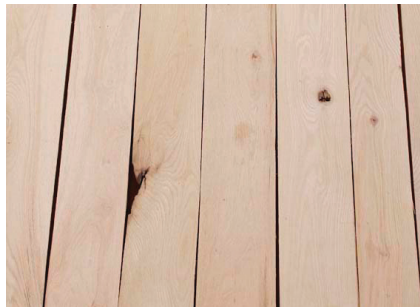
**FAS**



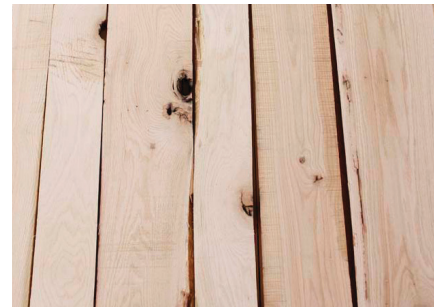
**CAB**



**Com Sel**



**Rustic**



**#2A**

**North American Hardwood Species Comparison Chart**

Lumber (12% Moisture Content)	Machining	Sanding	Finishing	Gluing	Fastening Nailing/ Screwing	Weight per bdft	Specific Gravity (Density)	Hardness (Janka)	Bending Strength (MOR)	Bending Stiffness (MOE)	Dimensional Movement (Shrinkage)	
											R (%)	T (%)
Ash	9	10	9	8	6	3.56	.61	1320	15000	1740	4.9	7.8
Hard Maple	9	8	10	9	4	3.73	.64	1450	15800	1830	4.8	9.9
PC Maple	9	9	10	9	5	2.74	.50	850	10700	1450	3.7	7.1
Soft Maple	8	9	10	9	5	3.19	.55	950	13400	1640	4.0	8.2
<b>Red Oak (Northern)</b>	<b>10</b>	<b>10</b>	<b>9</b>	<b>9</b>	<b>7</b>	<b>3.64</b>	<b>.63</b>	<b>1220</b>	<b>14380</b>	<b>1761</b>	<b>4.0</b>	<b>8.6</b>
White Oak	9	10	9	7	7	3.94	.68	1350	14380	1762	4.4	8.8
White Oak (Western)	9	9	9	8	8	4.34	.72	1640	10200	1090	4.2	9.0